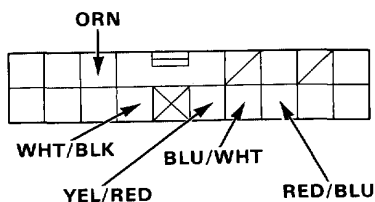


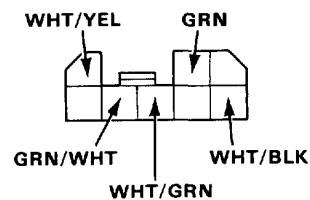
View from terminal side

KQ and KY models:



View from wire side

Except KQ and KY models:



View from wire side

Wiper System:

No.	Terminal	Test condition	Test: desired result	Possible cause (if result is not obtained)
1	H	Under all conditions.	Check for continuity to ground: should be continuity.	• Poor ground (G401, G402)
2	C	Ignition switch ON and wiper switch INT.	Check for voltage to ground: should be battery voltage.	• Blown No.6 (30 A) fuse. • Faulty wiper switch. • An open in the wire.
3	D	Ignition switch ON and washer switch ON.	Check for voltage to ground: should be battery voltage.	• Blown No.6 (30 A) fuse. • Faulty washer switch. • An open in the wire.
4	I	Ignition switch ON.	Check for voltage to ground: should be battery voltage.	• Blown No.6 (30 A) fuse. • An open in the wire.
5	J	Wiper switch LO.	Check for continuity to ground: should be continuity.	• Faulty wiper switch. • An open in the wire. • Poor ground (G401, G402).

Light-on Warning System:

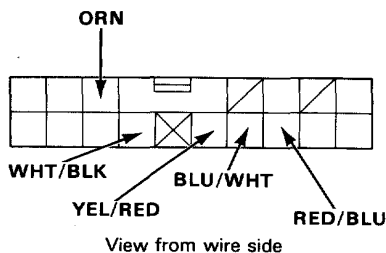
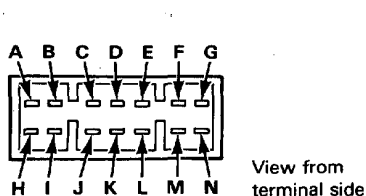
No.	Terminal	Test condition	Test: desired result	Possible cause (if result is not obtained)
1	H	Under all conditions.	Check for continuity to ground: should be continuity.	• Poor ground (G401, G402)
2	M	Lighting switch ON.	Check for voltage to ground: should be battery voltage.	• Blown No.23 (15 A) fuse. • Faulty lighting switch. • An open in the wire.
3	B	Ignition switch ON.	Check for voltage to ground: should be battery voltage.	• Blown No.1 (10 A) fuse. • Faulty dash fuse box.
4	A	Driver's door opened.	Check for continuity to ground: should be continuity. NOTE: Before testing, remove No.1 (10 A) fuse.	• Faulty driver's door switch. • An open in the wire.

(cont'd)

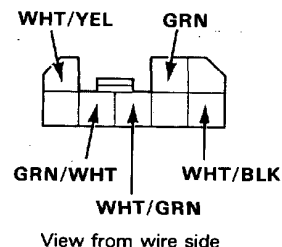
Integrated Control Unit

Input Test (Without Daytime and Dim-Dip Light, cont'd)

KQ and KY models:



Except KQ and KY models:



Entry Light Timer System:

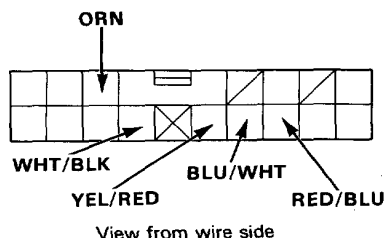
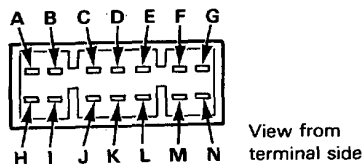
No.	Terminal or Wire	Test condition	Test: desired result	Possible cause (if result is not obtained)
1	H	Under all conditions.	Check for continuity to ground: should be continuity.	<ul style="list-style-type: none"> • Poor ground (G401, G402) • An open in the wire.
2	L	Under all conditions.	Check for voltage to ground: should be battery voltage.	<ul style="list-style-type: none"> • Blown No.22 (15 A) fuse. • An open in the wire.
3	WHT/BLK	Under all conditions.	Check ignition key light operation: connect the WHT/BLK terminal to the H terminal.	<ul style="list-style-type: none"> • Blown bulb • An open in the wire.
4	A	Driver's door opened.	Check for continuity to ground: should be continuity. NOTE: Before testing, remove No.1 (10 A) fuse.	<ul style="list-style-type: none"> • Faulty driver's door switch. • An open in the wire.

Seat Belt Reminder System (KY model only):

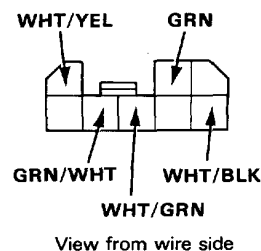
No.	Terminal or Wire	Test condition	Test: desired result	Possible cause (if result is not obtained)
1	H	Under all conditions.	Check for continuity to ground: should be continuity.	<ul style="list-style-type: none"> • Poor ground (G401, G402) • An open in the wire.
2	YEL/RED	Ignition switch ON.	Check for voltage to ground: should be battery voltage.	<ul style="list-style-type: none"> • Blown No.1 (10 A) fuse. • An open in the wire.
3	BLU/WHT	Ignition switch turned form "II" to "O" position.	Check for voltage to ground: should be battery voltage.	<ul style="list-style-type: none"> • Faulty ignition key switch. • An open in the wire.
4	RED/BLU	Driver's seat belt is not buckled.	Check for continuity to ground: should be continuity.	<ul style="list-style-type: none"> • Faulty seat belt switch. • Poor ground (G502). • An open in the wire.
5	ORN	Ignition switch ON and connect the B terminal to the ORN terminal.	Check chime operation: Chime should activate each time the battery is connected.	<ul style="list-style-type: none"> • Faulty chime. • An open in the wire.



KQ and KY models:



Except KQ and KY models:



Brake Light System (KG model only):

No.	Terminal or Wire	Test condition	Test: desired result	Possible cause (if result is not obtained)
1	H	Under all conditions.	Check for continuity to ground: should be continuity.	<ul style="list-style-type: none"> • Poor ground (G401, G402) • An open in the wire.
2	WHT/YEL	Under all conditions.	Check for voltage to ground: should be battery voltage.	<ul style="list-style-type: none"> • Blown No.25 (20 A) fuse. • An open in the wire.
3	WHT/GRN	Brake pedal pushed.	Check for continuity to ground: should be continuity	<ul style="list-style-type: none"> • Faulty failure sensor. • An open in the wire. • Poor ground (G701)
4	GRN	Ignition switch ON.	Attach to ground: Brake indicator light in the safety indicator should come on.	<ul style="list-style-type: none"> • Faulty safety indicator (in the gauge assembly). • An open in the wire.
5	GRN/WHT	Brake pedal pushed.	Check for voltage to ground: should be battery voltage.	<ul style="list-style-type: none"> • Faulty brake light switch. • An open in the wire.
		Brake pedal released.	Check for continuity to ground: should be continuity.	<ul style="list-style-type: none"> • Poor ground (G701) • An open in the wire.

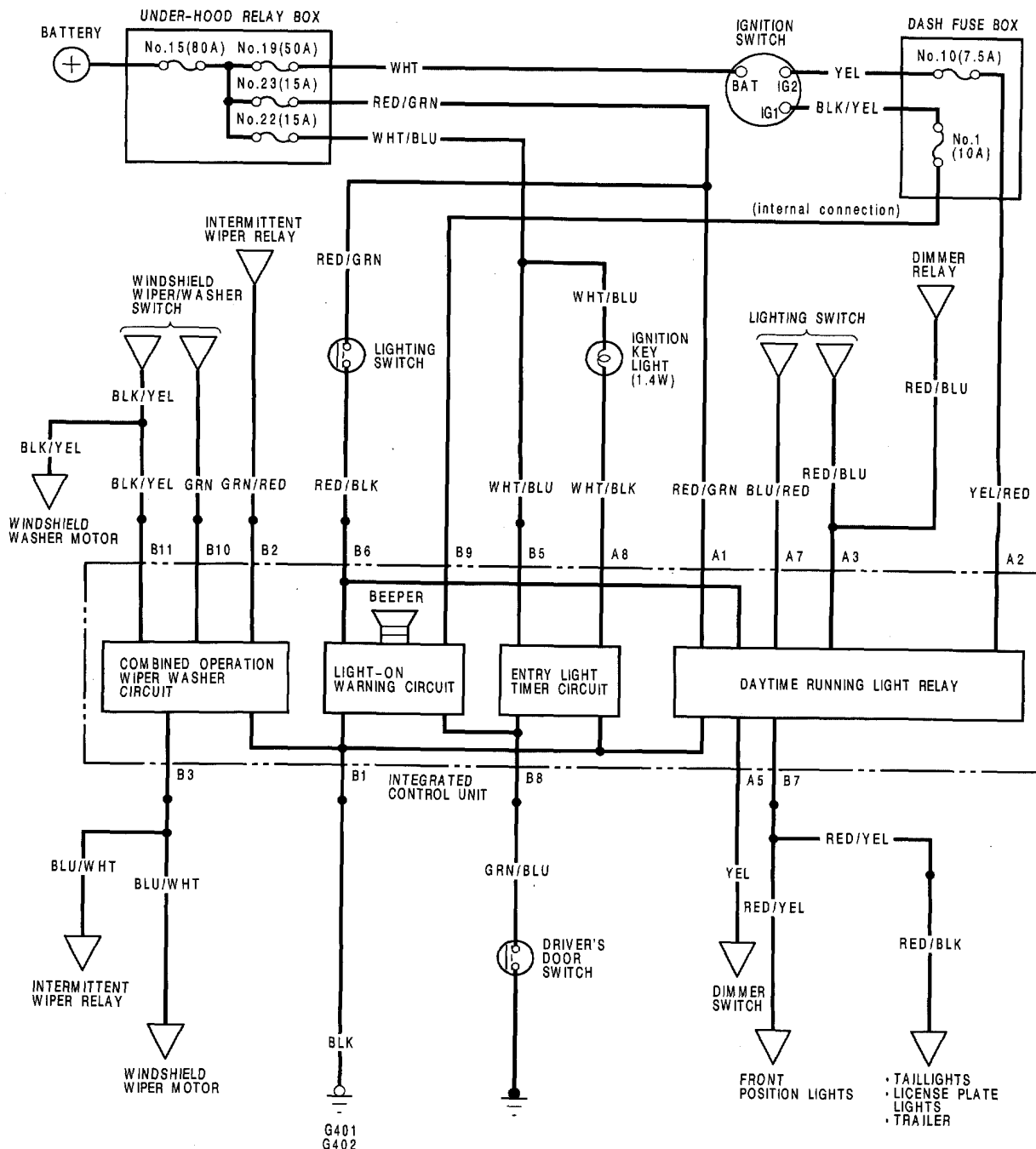
Integrated Control Unit

Circuit Diagram (With Daytime Light)

Description:

A multi-function control unit located on the left side kick panel, integrates the functions of the combined operation with wiper/washer circuit, light-on warning circuit, entry light timer circuit and daytime running light relay onto one circuit board, sharing common circuit functions.

NOTE: Several different wires have the same color. They have been given a number suffix to distinguish them (for example RED/BLK¹ and RED/BLK² are not the same).

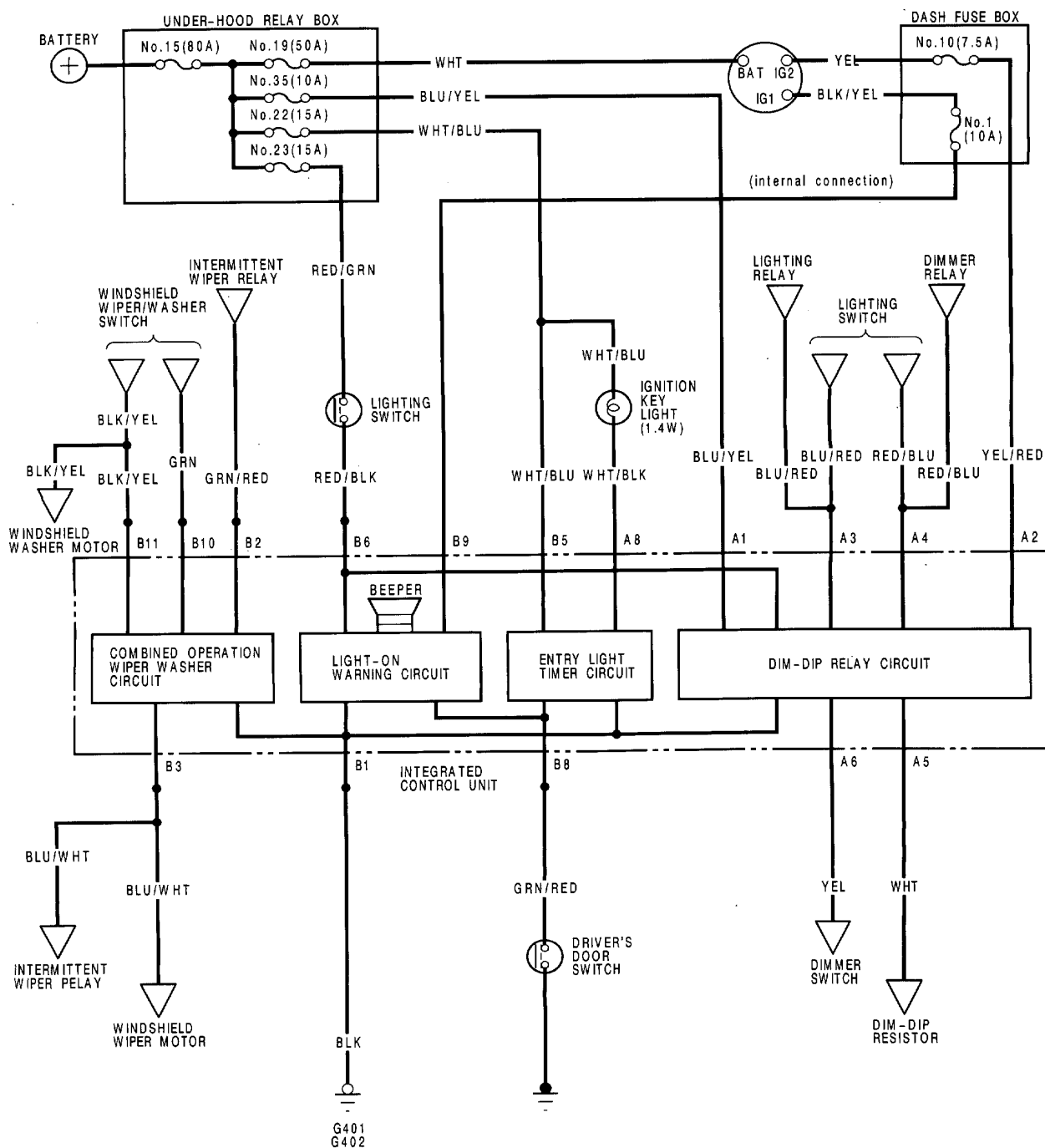




(With Dim-Dip Light)

Description:

A multi-function control unit located on the right side kick panel, integrates the functions of the combined operation with wiper/washer circuit, light-on warning circuit, entry light timer circuit and dim-dip relay circuit onto one circuit board, sharing common circuit functions.



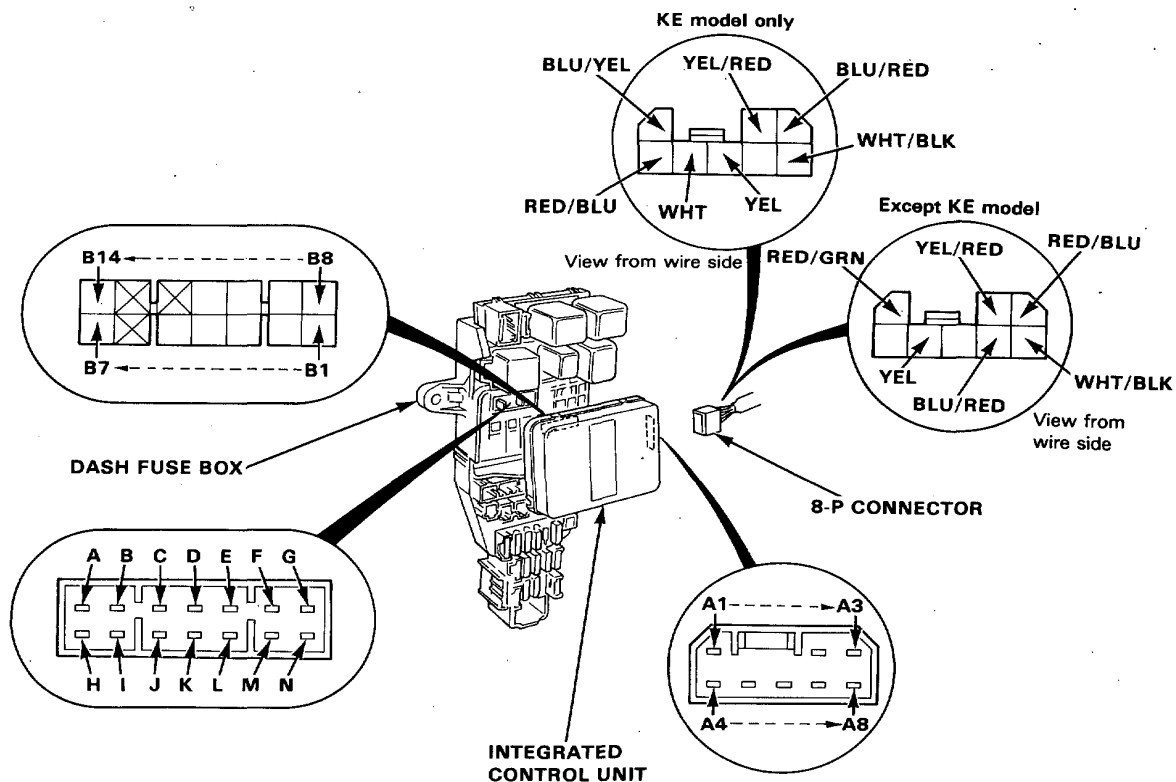
Integrated Control Unit

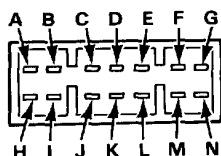
Input Test (With Daytime and Dim-Dip Light)

Remove the driver's side kick panel cover then disconnect the 8-P connector from the integrated control unit. Remove the integrated control unit from the dash fuse box.

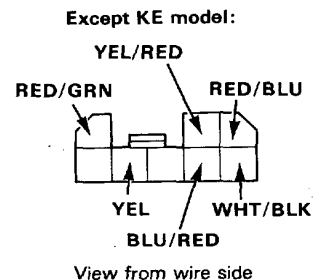
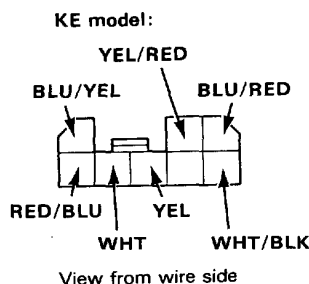
Make the following input tests at the harness pins. If all tests prove OK, yet the system still fails to work, replace the control unit.

NOTE: Do not disconnect all of the connectors on the dash fuse box except the integrated control unit.





View from terminal side



Wiper System:

No.	Terminal	Test condition	Test: desired result	Possible cause (if result is not obtained)
1	H	Under all conditions.	Check for continuity to ground: should be continuity.	• Poor ground (G401, G402)
2	C	Ignition switch ON and wiper switch INT.	Check for voltage to ground: should be battery voltage.	• Blown No.6 (30 A) fuse. • Faulty wiper switch. • An open in the wire.
3	D	Ignition switch ON and washer switch ON.	Check for voltage to ground: should be battery voltage.	• Blown No.6 (30 A) fuse. • Faulty washer switch. • An open in the wire.
4	I	Ignition switch ON.	Check for voltage to ground: should be battery voltage.	• Blown No.6 (30 A) fuse. • An open in the wire.
5	J	Wiper switch LO.	Check for continuity to ground: should be continuity.	• Faulty wiper switch. • An open in the wire. • Poor ground (G401, G402).

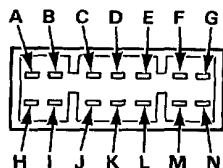
Light-on Warning System:

No.	Terminal	Test condition	Test: desired result	Possible cause (if result is not obtained)
1	H	Under all conditions.	Check for continuity to ground: should be continuity.	• Poor ground (G401, G402)
2	M	Lighting switch ON.	Check for voltage to ground: should be battery voltage.	• Blown No.23 (15 A) fuse. • Faulty lighting switch. • An open in the wire.
3	B	Ignition switch ON.	Check for voltage to ground: should be battery voltage.	• Blown No.1 (10 A) fuse. • Faulty dash fuse box.
4	A	Driver's door opened.	Check for continuity to ground: should be continuity. NOTE: Before testing, remove No.1 (10 A) fuse.	• Faulty driver's door switch. • An open in the wire.

(cont'd)

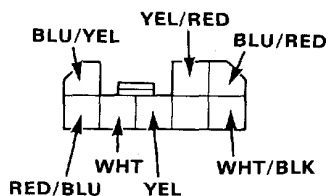
Integrated Control Unit

Input Test (With Daytime and Dim-Dip Light, cont'd)



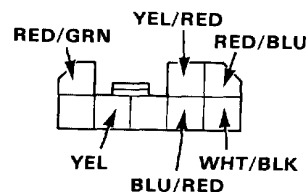
View from terminal side

KE model:



View from wire side

Except KE model:



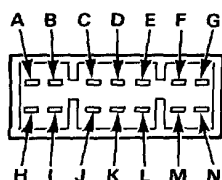
View from wire side

Entry Light Timer System:

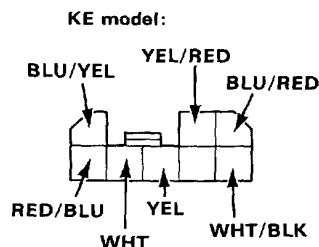
No.	Terminal or Wire	Test condition	Test: desired result	Possible cause (if result is not obtained)
1	H	Under all conditions.	Check for continuity to ground: should be continuity.	<ul style="list-style-type: none"> • Poor ground (G401, G402) • An open in the wire.
2	L	Under all conditions.	Check for voltage to ground: should be battery voltage.	<ul style="list-style-type: none"> • Blown No.22 (15 A) fuse. • An open in the wire.
3	WHT/BLK	Under all conditions	Check ignition key light operation: connect the WHT/BLK terminal to the H terminal.	<ul style="list-style-type: none"> • Blown bulb. • An open in the wire.
4	A	Driver's door opened.	Check for continuity to ground: should be continuity. NOTE: Before testing, remove No.1 (10 A) fuse.	<ul style="list-style-type: none"> • Faulty driver's door switch. • An open in the wire.

Daytime Running Light System (Except KE model):

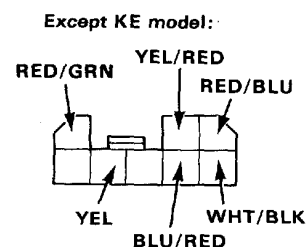
No.	Terminal or Wire	Test condition	Test: desired result	Possible cause (if result is not obtained)
1	H	Under all conditions.	Check for continuity to ground: should be continuity.	<ul style="list-style-type: none"> • Poor ground (G401, 402) • An open in the wire.
2	RED/GRN	Under all conditions.	Check for voltage to ground: should be battery voltage.	<ul style="list-style-type: none"> • Blown No.23 (15 A) fuse. • An open in the wire.
3	BLU/RED and M	Lighting switch	Check for voltage to ground: should be battery voltage.	<ul style="list-style-type: none"> • Faulty lighting switch. • Faulty lighting relay. • Faulty dimmer relay. • An open in the wire.
4	RED/BLU	Passing switch ON.	Check for voltage to ground: should be battery voltage.	<ul style="list-style-type: none"> • Faulty lighting switch. • Faulty lighting relay. • An open in the wire.
5	YEL/RED	Ignition switch ON.	Check for voltage to ground: should be battery voltage.	<ul style="list-style-type: none"> • Blown No.10 (7.5 A) fuse. • Fault dash fuse box. • An open in the wire.
6	N	Connect the RED/GRN terminal to the N terminal.	Front position lights, taillights and license plate lights should come on.	<ul style="list-style-type: none"> • Blown bulbs. • An open in the wire.
7	YEL	Dimmer switch HI.	Check for continuity to ground: should be continuity.	<ul style="list-style-type: none"> • Faulty lighting switch. • Poor ground (G251).



View from
terminal side



View from wire side



View from wire side

Dim-Dip Headlight System (KE model):

No.	Terminal or Wire	Test condition	Test: desired result	Possible cause (if result is not obtained)
1	H	Under all conditions.	Check for continuity to ground: should be continuity.	<ul style="list-style-type: none"> • Poor ground (G401, G402) • An open in the wire.
2	BLU/YEL	Under all conditions.	Check for voltage to ground: should be battery voltage.	<ul style="list-style-type: none"> • Blown No.35 (10 A) fuse. • An open in the wire.
3	YEL/RED	Ignition switch ON.	Check for voltage to ground: should be battery voltage.	<ul style="list-style-type: none"> • Blown No.10 (7.5 A) fuse. • Faulty dash fuse box. • An open in the wire.
4	BLU/RED and M	Lighting switch	Check for voltage to ground: should be battery voltage.	<ul style="list-style-type: none"> • Faulty lighting switch. • Faulty lighting relay. • Faulty dimmer relay. • An open in the wire.
5	WHT	Lighting switch	Check for voltage to ground: should be battery voltage.	<ul style="list-style-type: none"> • Faulty Dim-Dip resistor. • Blown No.37 (20 A) fuse. • Blown No.38 (20 A) fuse. • Faulty lighting relay. • An open in the wire.
6	RED/BLU	Passing switch ON.	Check for voltage to ground: should be battery voltage.	<ul style="list-style-type: none"> • Faulty lighting switch. • Faulty lighting relay. • An open in the wire.
7	YEL	Dimmer switch HI.	Check for continuity to ground: should be continuity.	<ul style="list-style-type: none"> • Faulty lighting switch. • Poor ground (G251)

Light-on Warning System

Description

NOTE: Refer to page 16-143, 16-148 or 16-149 for wiring description of the light-on warning circuit, and page 16-145 or 16-151 for the input test of the warning circuit.

When the light on, voltage is applied to the warning circuit on the integrated control unit.

When you open the driver's door, the warning circuit senses ground through closed door switch.

With voltage at the "B6" terminal, ground at the "B8" terminal, the beeper is activated to remind the driver to turn off the lights.

Entry Light Timer System

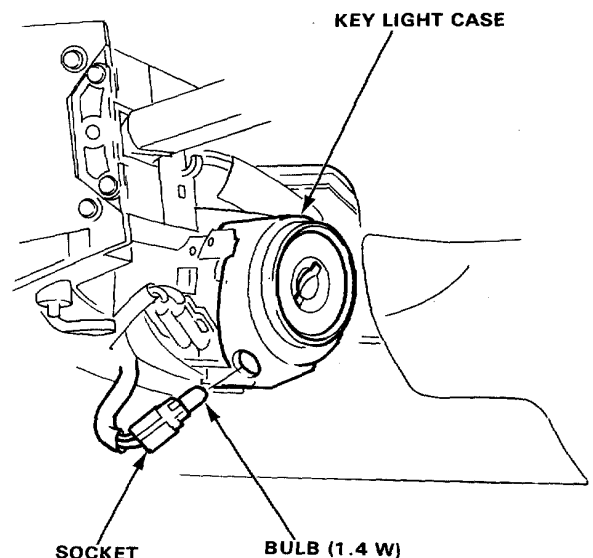
Description

NOTE: Refer to page 16-143, 16-148 or 16-149 for wiring description of the entry light timer circuit, and page 16-146 or 16-152 for the input test of the timer circuit.

If the driver's door has been opened, the ignition key light goes on and stays on for about 8 seconds after the driver's door is closed.

Ignition Key Light Replacement

1. Remove the steering wheel and the steering column covers.
2. Remove the bulb/socket from the key light case by turning the socket 45°.



- Door switch test: See page 16-175.